

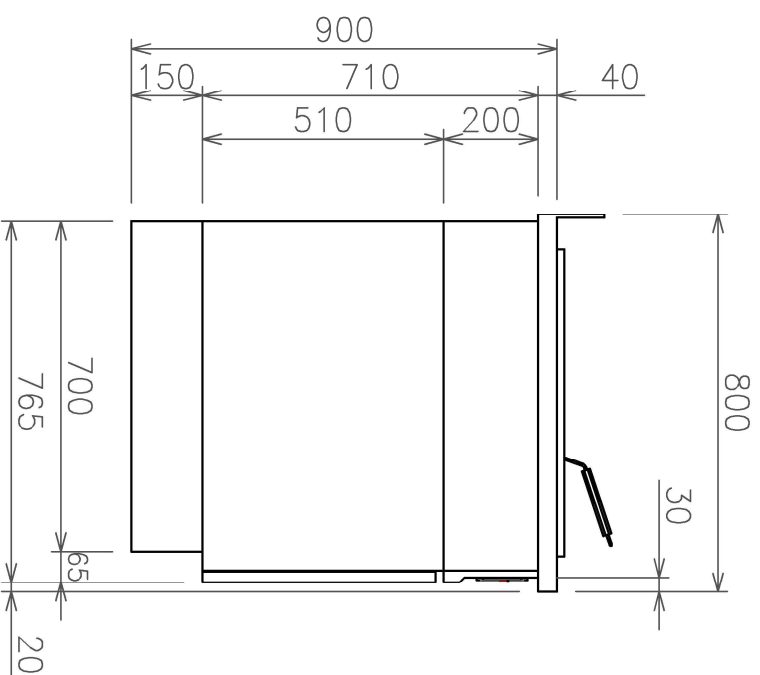
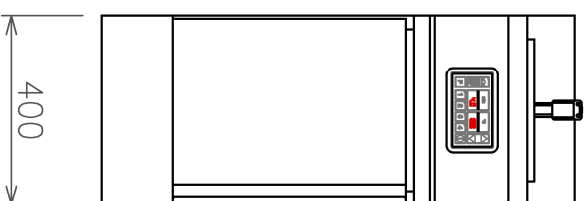
with pump



with lift



with pump and lift



Technical data	
Dimensions (LxTxH)	300 x 650 x 750/900 mm
Basket size	220 x 320 x 155 mm
Basket capacity	1.8 kg
Total capacity	12.5-14.5 Liter
Connected load	11.0 kW
Voltage	3-phase 400 V AC
Fuse	3 x 16 A
Number of basins	1
Number of baskets	1
Frying output (chilled food)	36 kg/h
Frying output (frozen food)	27 kg/h
Thermostat control range	50-190 C°
Sensible heat dissipation	0.99 kW
Latent heat dissipation	7.70 kW
Steam output	13.39 kg/h
Insulation value	0.18 m <sup>2</sup> K/W (R-value)
Water protection	IPX4
Automatic basket lift	optional
Integrated oil/fat pump	optional
Mobile design	optional
Door hinge	left/right

Incl. cable 2m, WITHOUT plug

Technical modifications reserved

## Built-in Deep Fat Fryers FrylineEVO

Built-in fryers, incl. frying basket

Type: SFR-EVO 31E

Drawing no: SFR-EVO 31E

Index 00

Format	A3	Scale	1:10/1:16	Index	00	Date	12.12.2024	Draftsman	NeV
--------	----	-------	-----------	-------	----	------	------------	-----------	-----

SALVIS AG  
CH- 4665 Oftringen  
Tel. +41 62 788 18 18  
www.salvis.ch  
smart cooking



We are the owners of the copyright of this drawing.  
Any use or partial use which has not been authorized by us is forbidden in accordance with current legislation. This includes making unauthorized copies of the drawing or letting others make use of it or divulging information from it to third parties.  
Violation of these rules are legally punishable and make the offender liable to the payment of damages.